

# FIREZERO PWCB - Party Wall Cavity Barrier

## Series 3300

### Party Wall Cavity Barrier for Masonry AND Framed Constructions

MDL Firezero Party Wall Cavity Barrier is manufactured from A1 non-combustible Rockwool insulation and encapsulated in a colour coded polythene sleeve.

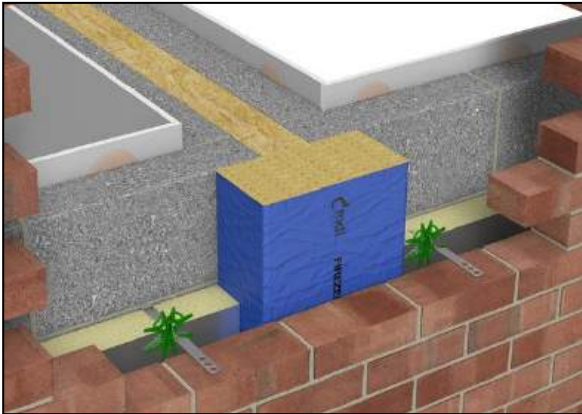
This barrier has been designed to prevent fire penetration, reduce sound transmission and help maintain thermal integrity in external wall cavities at party wall junctions.

- ✓ Tested to BS EN1366-4:2021.
- ✓ 3rd Party Assessed & Accredited.
- ✓ Fire resistance up to 2 hours.
- ✓ Available for cavity widths 25 – 300mm.
- ✓ Suitable for horizontal & vertical applications.
- ✓ Meets requirements of Approved Document B.
- ✓ Meets requirements of Robust Detail Part E.
- ✓ Zero ODP and GWP.
- ✓ Easy to install.
- ✓ Colour coded.



## Installation

### Masonry Construction



FIREZERO Party Wall Cavity Barrier is designed to be compression fitted into the cavity wall during the brickwork process, no additional fixings are required.

The barrier is designed to fully fill the cavity so it is essential to ensure the correct size barrier has been selected for the cavity width, and a minimum of 10mm compression is achieved upon completion.

Any cavity insulation must be cut back to ensure correct compression of the barrier is maintained between the inner and outer leaf.

The barrier should bear equally onto each leaf of the party wall.

Attention must be paid at joints to ensure they are tightly butt jointed and maintain a continuous fire seal.

If any gaps are present or the Party Wall Cavity Barrier is damaged in any way this could result in a reduction of the stated performance.

### Framed Construction



FIREZERO Party Wall Cavity Barrier is designed to be compression fitted and is initially fixed through the polythene flanges using staples or clout nails at 150/200mm centres.

When the brickwork is complete the barrier is held in the cavity under a minimum of 10mm compression.

The barrier should bear equally onto each leaf of the party wall.

For vertical installation both flanges are fixed to the inner leaf.

For horizontal installation only the upper flange requires fixing. Breather membrane should be cut to overlap the upper flange of the barrier.

Attention must be paid at joints to ensure they are tightly butt jointed and maintain a continuous fire seal.

If any gaps are present or the Party Wall Cavity Barrier is damaged in any way this could result in a reduction of the stated performance.

### ALL CONSTRUCTIONS

#### Cut To Length

Open the polythene sleeve end seal.

Remove the barrier, cut to length and return to sleeve.

Trim excess polythene and reseal, or use it to weather an adjacent joint.

#### End of Run / Corners

The barrier should be cut to the required length and tightly butt jointed. Barriers must not be bent around corners.

## Product Information

Cavity Size (mm)	300mm Wide PWCB		250mm Wide PWCB		200mm Wide PWCB		Fire Rating Horizontal		Fire Rating Vertical	
	Product Code	Lengths Per Pack	Product Code	Lengths Per Pack	Product Code	Lengths Per Pack	Integrity	Insulation	Integrity	Insulation
25-39	3300/300/025-039	10	3300/250/025-039	12	3300/200/025-039	15	120	120	120	60
40-50	3300/300/040-050	8	3300/250/040-050	9	3300/200/040-050	12	120	120	120	60
51-65	3300/300/051-065	8	3300/250/051-065	8	3300/200/051-065	12	120	60	120	120
66-75	3300/300/066-075	8	3300/250/066-075	7	3300/200/066-075	12	60	60	90	60
76-90	3300/300/076-090	6	3300/250/076-090	6	3300/200/076-090	9	60	60	90	60
91-100	3300/300/091-100	6	3300/250/091-100	6	3300/200/091-100	9	60	60	90	60
101-110	3300/300/101-110	4	3300/250/101-110	5	3300/200/101-110	6	60	60	90	60
111-120	3300/300/111-120	4	3300/250/111-120	3	3300/200/111-120	6	60	60	90	60
121-130	3300/300/121-130	4	3300/250/121-130	3	3300/200/121-130	6	60	60	90	60
131-140	3300/300/131-140	4	3300/250/131-140	4	3300/200/131-140	6	60	60	90	60
141-150	3300/300/141-150	4	3300/250/141-150	4	3300/200/141-150	6	60	60	90	60
151-160	3300/300/151-160	4	3300/250/151-160	4	3300/200/151-160	4	60	60	90	60
161-170	3300/300/161-170	4	3300/250/161-170	4	3300/200/161-170	4	60	60	90	60
171-180	3300/300/171-180	3	3300/250/171-180	3	3300/200/171-180	4	60	60	90	60
181-190	3300/300/181-190	2	3300/250/181-190	3	3300/200/181-190	4	60	60	90	60
191-200	3300/300/191-200	2	3300/250/191-200	2	3300/200/191-200	4	60	60	90	60
201-210	3300/300/201-210	2	3300/250/201-210	3	3300/200/201-210	4	30	30	30	30
211-220	3300/300/211-220	2	3300/250/211-220	3	3300/200/211-220	4	30	30	30	30
221-230	3300/300/221-230	2	3300/250/221-230	3	3300/200/221-230	4	30	30	30	30
231-240	3300/300/231-240	2	3300/250/231-240	2	3300/200/231-240	4	30	30	30	30
241-250	3300/300/241-250	2	3300/250/241-250	2	3300/200/241-250	3	30	30	30	30
251-260	3300/300/251-260	2	3300/250/251-260	2	3300/200/251-260	3	30	30	30	30
261-270	3300/300/261-270	2	3300/250/261-270	2	3300/200/261-270	3	30	30	30	30
271-280	3300/300/271-280	2	3300/250/271-280	2	3300/200/271-280	3	30	30	30	30
281-290	3300/300/281-290	2	3300/250/281-290	2	3300/200/281-290	3	30	30	30	30
291-300	3300/300/291-300	2	3300/250/291-300	2	3300/200/291-300	3	30	30	30	30

**FIREZERO PWCB standard length is 1200mm long but can be custom manufactured to any size required, so please contact us.**



## Technical Data

FIREZERO PWCB has been independently tested at Warrington fire both vertically and horizontally to BS EN 1366-4:2021 utilising the new 10:1 ratio giving the PWCB a fire rating up to 120 minutes.

IFC Certification undertook further assessments and deemed the product suitable for use with various boards on both timber and steel framing systems. Timber based boards must have a minimum density of 500kg/m<sup>3</sup>. Any other carrier board must have a minimum classification of A2 – s1 d0 in accordance with BS EN 13501-1. Minimum permissible thickness of boards is 9mm.

Meets the requirements of Approved Document E of the Building Regulations relating to sound transmission.

Complies with Building Regulations in England, Wales, Scotland and Northern Ireland.

## Environmental

Manufactured using stonewool slab which is 97% recyclable and classified as ZERO ODP and GWP. Party Wall Cavity Barriers are packed in polythene bags and cardboard sleeves for protection and stability during transit. Both the polythene bags and cardboard sleeves are widely recyclable.

## Storage

Party Wall Cavity Barrier should be stored dry and out of direct sunlight.

## COSHH

MDL are committed to supplying products which are both safe to install and manufactured in a safety conscious environment. We continue to assess all components used in our products to meet all the requirements of the Substances Hazardous to Health Regulations (COSHH). COSHH datasheets are available upon request for all MDL products and components used in our manufacturing processes.

## Disclaimer:

The information provided in this datasheet is intended for general guidance purposes only and does not constitute professional advice. Users are advised to conduct their own tests and evaluations to determine the suitability of the product for their specific application to meet relevant fire safety standards. Use of all products should be approved by the appropriate designer under CDM 2015 regulations.

MDL Insulations Ltd. shall not be liable for any loss or damage, including but not limited to indirect or consequential loss or damage, or any loss or damage whatsoever arising from the use of this product or reliance on the information provided in this datasheet.

It is the responsibility of the user to ensure proper installation, maintenance, and compliance with relevant guidelines. By using this product, the user agrees to accept all risks associated with its use and releases the manufacturer from any liability whatsoever.



T: 01543 450311

F: 01543 450885

E: [sales@mdlinsulations.co.uk](mailto:sales@mdlinsulations.co.uk)

W: [www.mdlinsulations.co.uk](http://www.mdlinsulations.co.uk)

Villa Works, 1 Plant Lane Business Park, Burntwood, Staffs, WS7 3GN